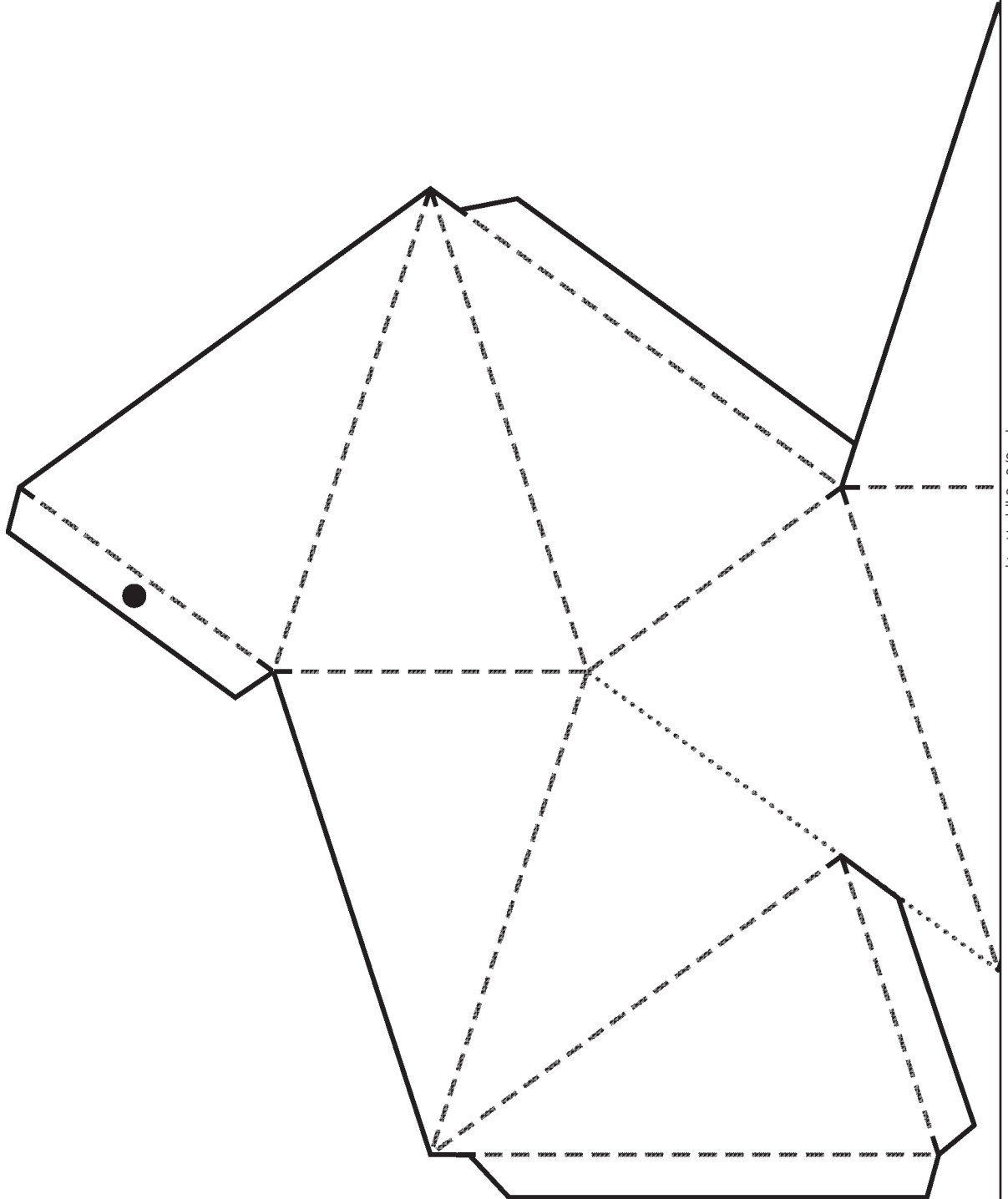


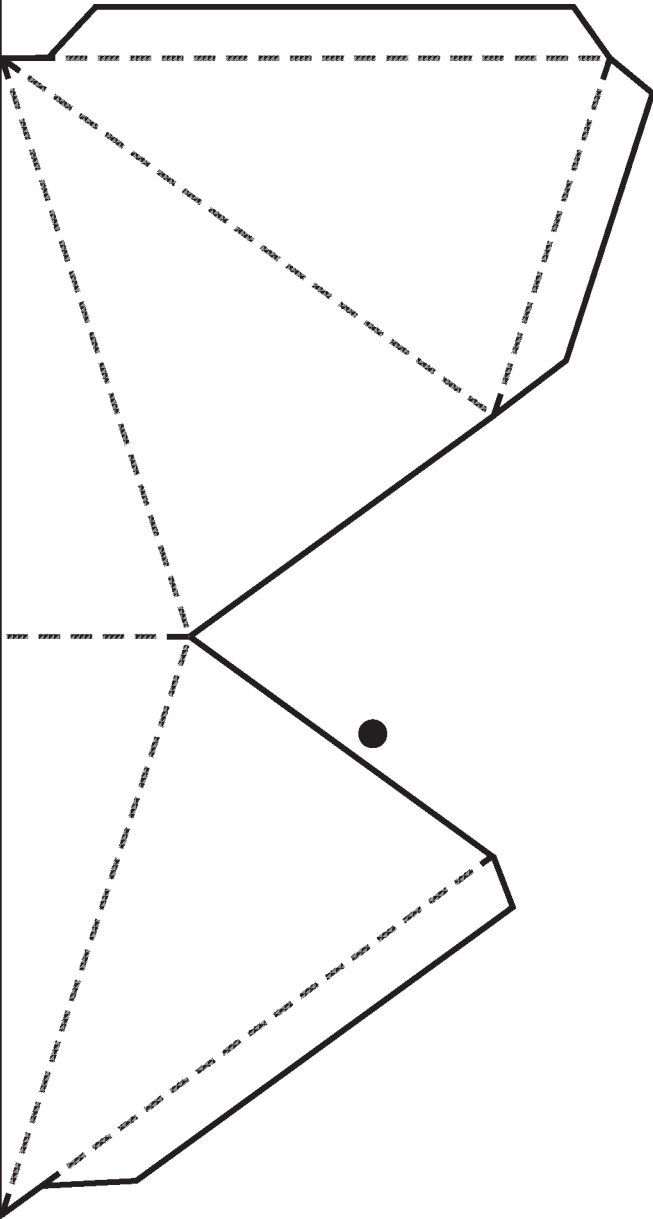
- = Schnittlinie
- = darunterliegende
Schnittlinie
- — = Faltlinie



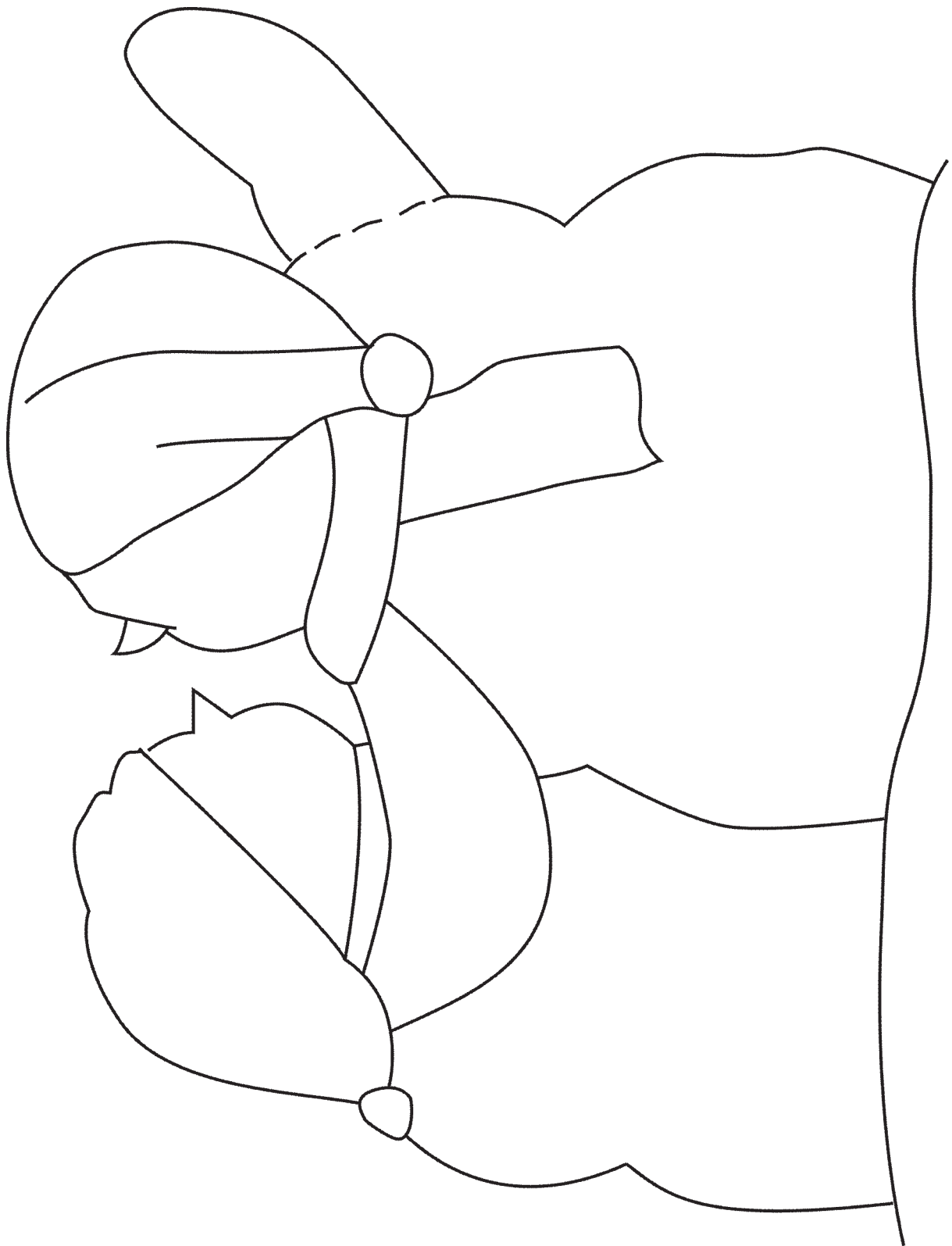
hier Modell 9 - 2/2 anlegen

- = Schnittlinie
- = darunterliegende Schnittlinie
- ——— = Faltlinie

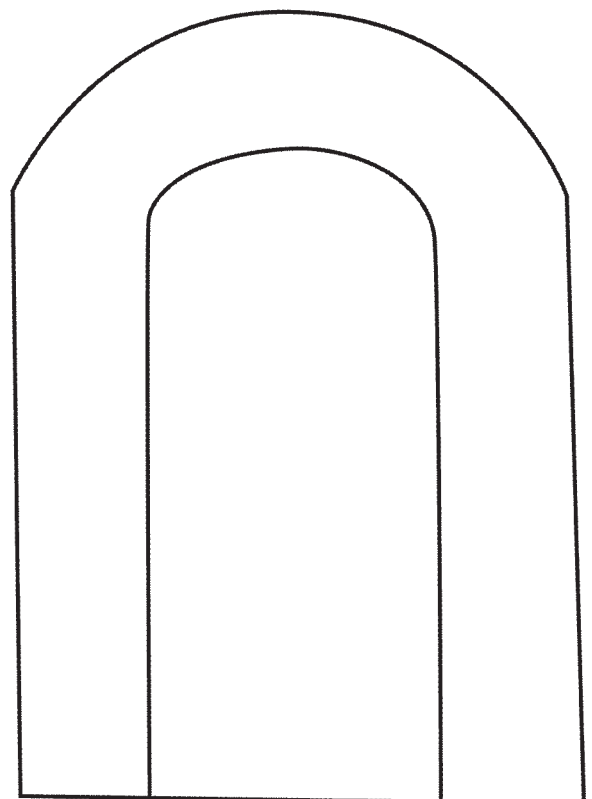
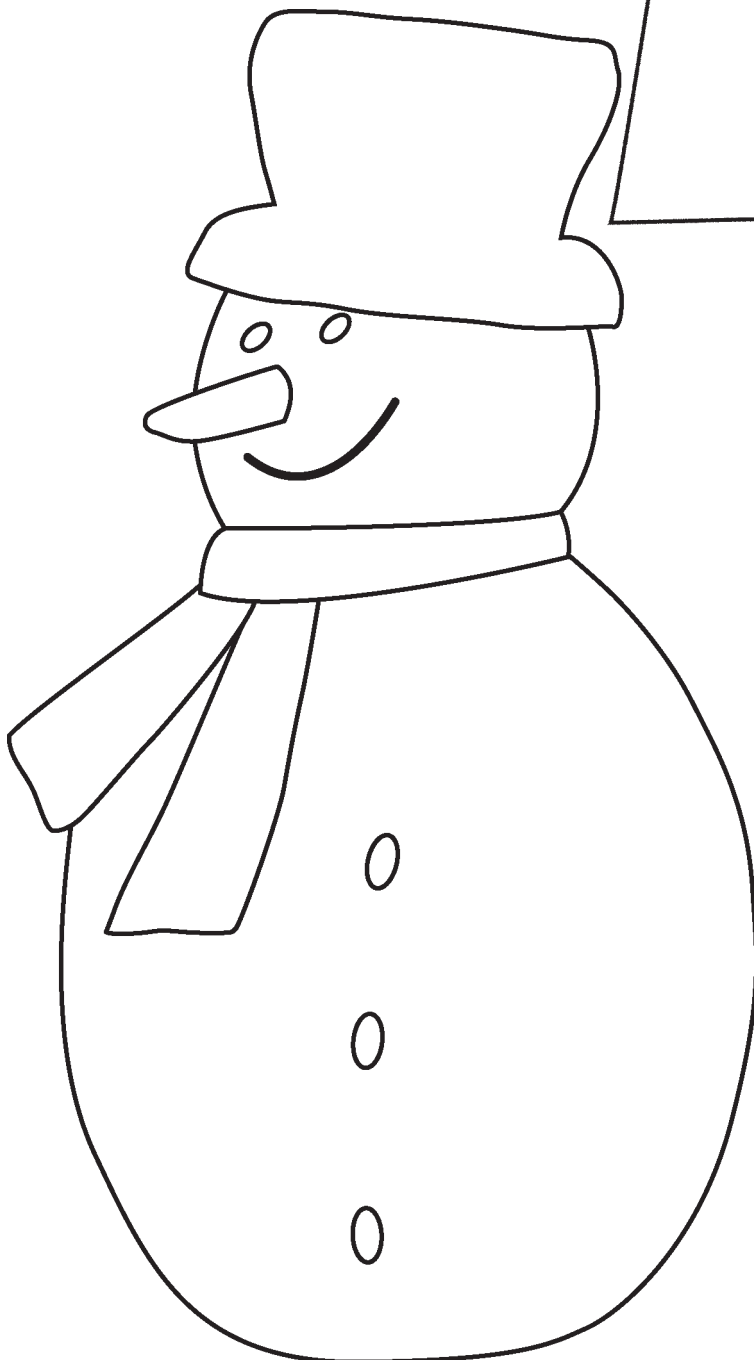
hier Modell 9 - 1/2 anlegen



- = Schnittlinie
..... = darunterliegende
Schnittlinie
—— ——— = Faltlinie



Stamm zu



- = Schnittlinie
- = darunterliegende
Schnittlinie
- ——— = Faltlinie

